



Beaufort County Public Works
Stormwater Infrastructure
Project Summary

Project Summary: Ashepoo Drive

Project #: 2010-051

Completed: Jul-10

Narrative Description of Project:

Project improved 301 L.F of drainage system. Installed (2) catch basins and 301 L.F. of roadside pipe. Removed and replaced (4) driveways. Installed sod for erosion control.

Material Cost, Rental Equipment Summary, and Labor

Material	Unit	Cost/Unit	Qty	Cost
15" HDPE Pipe	linear feet	\$6.22	320.0	\$1,990.40
15" 45 Degree Elbow	each	\$171.54	2.0	\$343.08
15" HDPE Split Coupling	each	\$68.52	2.0	\$137.04
15" Custom Basin w/ Grate	each	\$746.86	1.0	\$746.86
15" Drop In Grate	each	\$149.80	1.0	\$149.80
18" Round Drain Basin	each	\$870.98	1.0	\$870.98
4" Snap Coupling	each	\$1.66	4.0	\$6.64
4" Perforated Pipe	each	\$48.76	2.0	\$97.52
12" Catch Basin	each	\$42.39	1.0	\$42.39
Fill Dirt	ton	\$1.00	2.7	\$2.65
FLBC	ton	\$26.55	20.2	\$535.25
Recycled Concrete	ton	\$1.00	28.4	\$28.35
Concrete	cy	\$104.86	5.0	\$524.30
Silt Fence	sy	\$0.78	101.9	\$79.47
Centipede Sod	pallet	\$106.67	3.0	\$320.00
Water	gallon	\$0.01	8,800	\$88.00
4ft Flagger	each	\$0.34	4.0	\$1.36
Debris Disposal	ton	\$17.00	0.7	\$11.22
1x4x10 Appearance Board		\$4.25	12.0	\$50.97
Diesel	gallon	\$2.61	337.6	\$881.14
Gas	gallon	\$2.54	124.0	\$314.96
Labor	hours		566.0	\$12,400.91
Indirect Labor, Services, and Supplies				\$8,539.73
Total Cost of Materials, Rental Equip., and Labor				\$28,163.02

Note: Labor cost includes the employee's salary plus fringe benefits.

Site Photographs

Before



During



After



Ashepool Drive Project Summary Con't

Project #: 2010-051

Equipment Cost

Item	Asset No.	Cost/Hour	Hrs.	Cost
JCB Urban Excavator	23364	\$31.45	13.0	\$408.85
Bobcat T300	22847	\$20.10	18.0	\$361.80
JD Loader 444J	23271	\$29.75	5.0	\$148.75
Vacuum Truck	22812	\$22.16	14.0	\$310.24
Hydroseeder	18909	\$7.35	5.0	\$36.75
Dump Trucks		\$13.31	65.0	\$865.15
Pickup Trucks		\$4.12	136.0	\$560.32
Total Equipment Cost				\$2,691.86

Cost/hour excludes fuel cost.

Total Cost: \$30,854.88

Site Photographs

Before

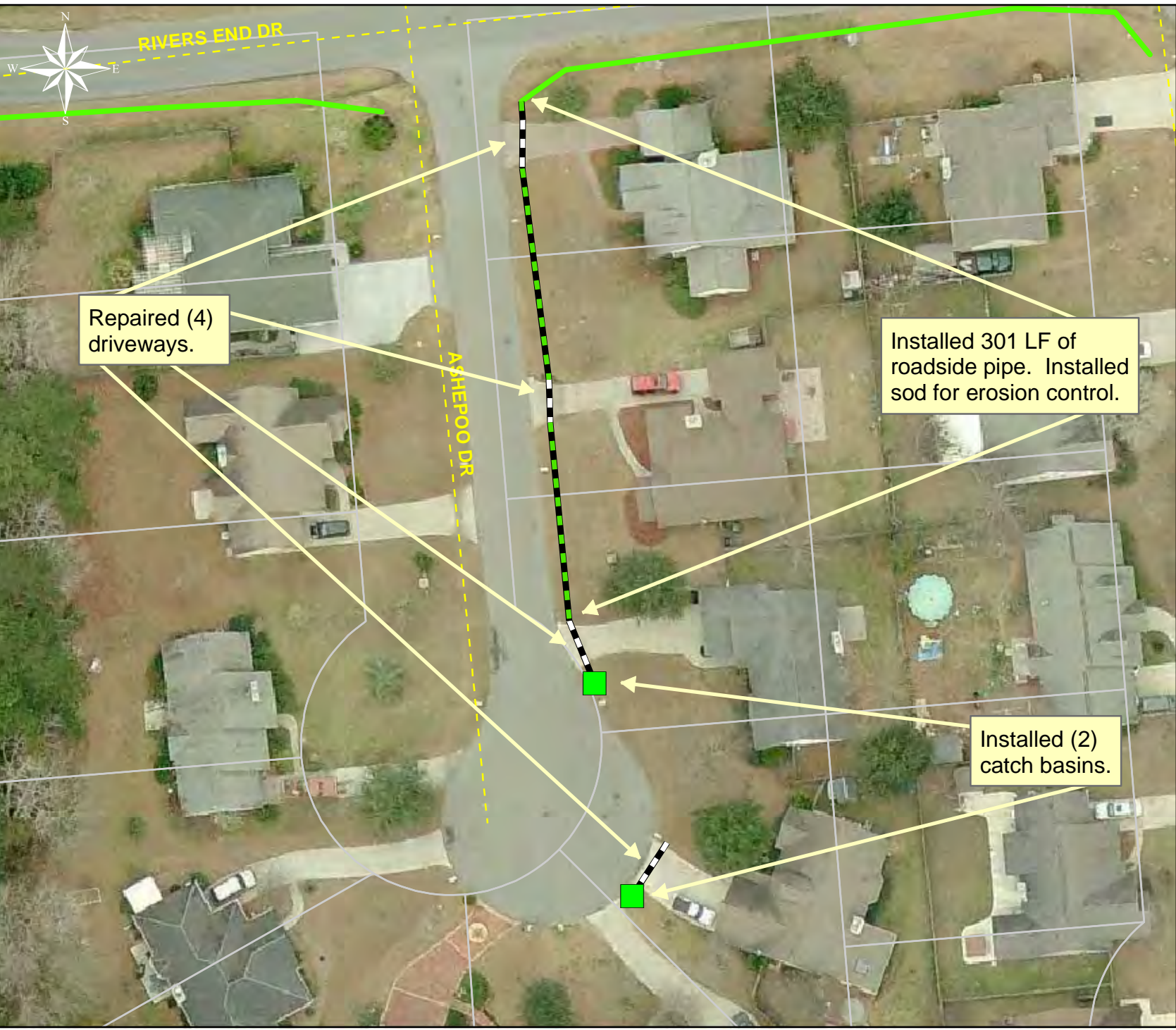


During



After





Project: Ashepoo Drive

Activity: Drainage Maintenance

Project #: 2010-051

Township: Bluffton

Completed: July 2010

Legend

Drainage Type

- River
- Stream
- Outfall
- Lateral
- Lateral Pipe
- Roadside
- Roadside Pipe
- Crossline
- D/W
- Access
- Piped
- Bleeder
- Parcels



1 inch = 45 feet